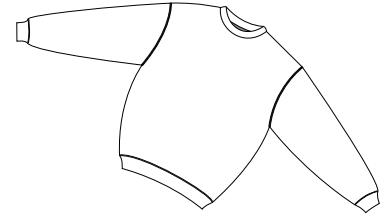
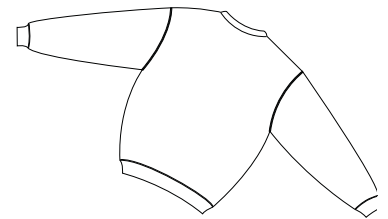


Crewneck Sweatshirt

PORT & COMPANY®



Front



Back

PC90

* 9-ounce 50/50 cotton/poly fleece * Spandex in collar, cuffs, and waistband * Coverseamed neck, armholes, and waistband * Set-in sleeves

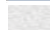

Care Instructions:
Machine wash cold, inside out, with like colors. Only non-chlorine bleach when needed. Tumble dry medium. Medium-hot iron. Do not iron decoration.

Finished Measurements in Inches

Size	S	M	L	XL	2XL	3XL	4XL
Width	20	22	24	26	28	30	32
Length	28	29	30	31	32	33	34
Sleeve	34 1/8	35 1/8	36 1/8	37 1/8	37 5/8	38 1/8	38 5/8

Body length measured from back neck seam to hem. Sleeve length measured from shoulder seam to hem.
Chest width measured 1" below arm hole.

Colors

-  Ash
-  Athletic Heather
-  White

Please be sure to let us know what size you need!



WWW.SPORTSRETRO.COM