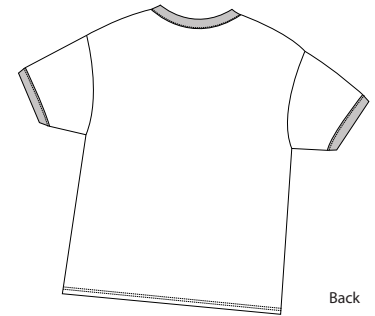
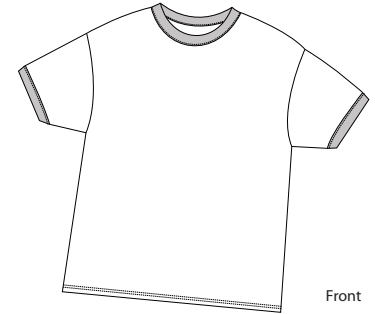


Ringer T-Shirt

PORT & COMPANY®



PC61R

- * 6.1-ounce * 100% ring spun combed cotton
- * Double needle bottom hem

Care Instructions:
Machine wash cold, inside out, with like colors. Noly non-chlorine bleach when needed. Tumble dry medium. Medium hot iron. Do not iron decoration.

Finished measurements in inches

Size	S	M	L	XL	2XL	3XL	4XL
Body	27	29	30	31	33	34	35
Chest	18	20	22	24	26	28	30
Sleeve	7.62	8.12	8.62	9.12	9.62	10.12	10.62
Neck	6.75	6.75	7.25	7.25	7.75	7.75	8.25
Trim Width	1	1	1	1	1	1	1

Chest width measured 1" below arm hole. Body length measured from back neck seam to hem. Sleeve length measured from shoulder seam to hem. Neck measured by width, seam to seam.

Colors

	Athletic Heather/Black
	Carolina Blue/Navy
	White/Athletic Maroon
	White/Black
	White/Navy
	White/Red
	White/Royal

Please Note:
Colors shown are approximate and for reference only. For closest match see PMS colors, or for exact match, returnable samples and grommeted samples are available.

Color chart

Base colors	Athletic Heather	Carolina Blue	White		
General PMS	No Match	646C	No Match		
Trim Colors	Black	Maroon	Navy	Red	Royal
General PMS	Process Black	229C	296C	200C	661C

Please be sure to let us know what size you need!

